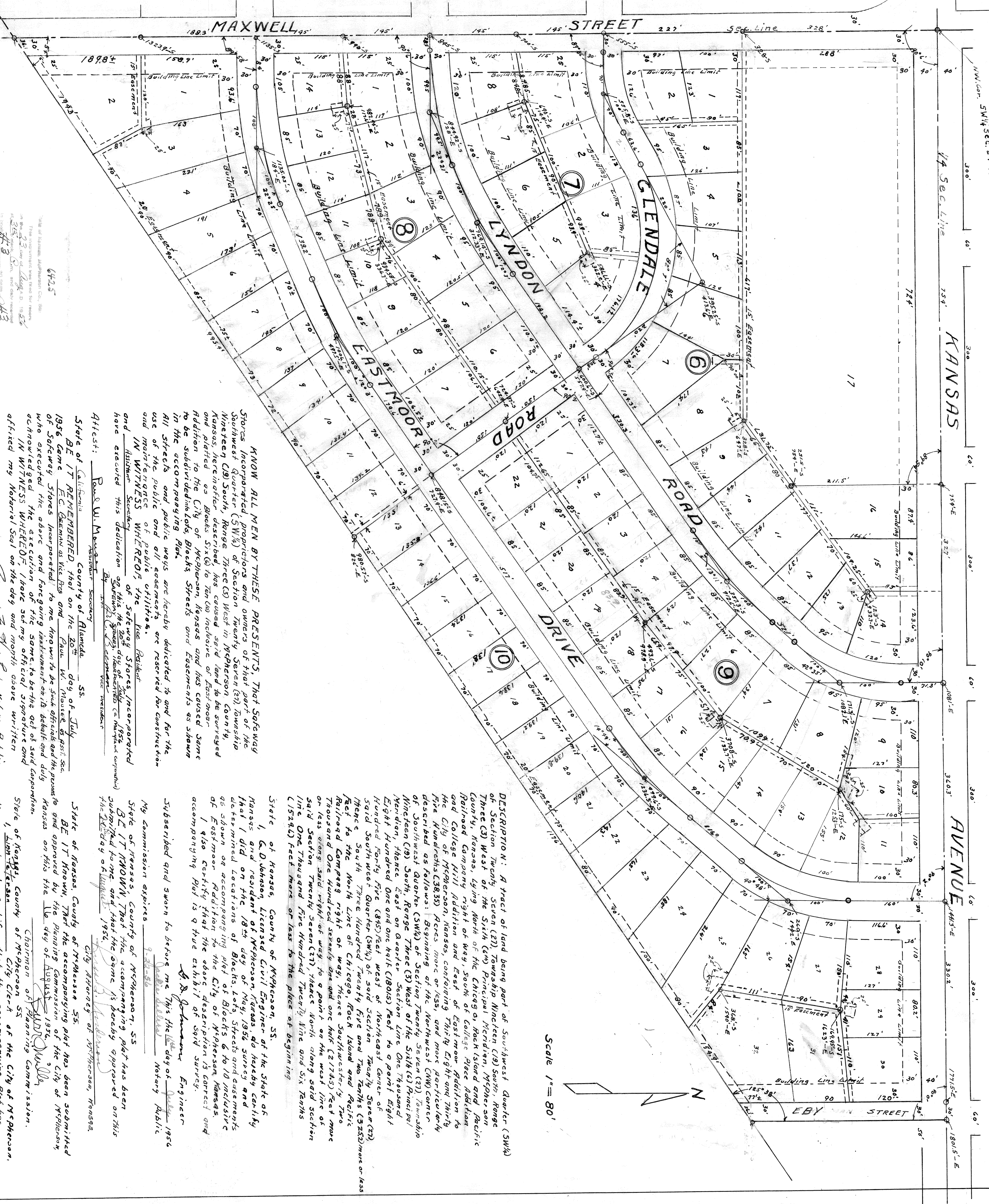


EASTMOOR ADDITION MCPHERSON KANSAS



Scale 1" = 80'

KNOW ALL MEN BY THESE PRESENTS, That Safeway Stores Incorporated, proprietors and owners of that part of the Southwest Quarter (SW 1/4) of Section Twenty Seven (27) Township Nineteen (19) South, Range Three (3) West in McPherson County, Kansas, hereinafter described, has caused said land to be surveyed and platted as Blocks Six (6) to Ten (10) inclusive of Eastmoor Addition to the City of McPherson, Kansas and has caused same to be subdivided into Lots, Blocks, Streets and Easements as shown in the accompanying Plat.

All streets and public ways are hereby dedicated to and for the use of the public and all easements are reserved for construction and maintenance of public utilities.

IN WITNESS WHEREOF, the Vice President and Assistant Secretary of Safeway Stores Incorporated have executed this dedication of this the 20th day of July 1956 at McPherson, Kansas.

By: Paul W. Mousier Vice President
Paul W. Mousier Assistant Secretary

Attest: Paul W. Mousier Assistant Secretary
Paul W. Mousier Assistant Secretary

State of Kansas, County of McPherson, SS.
BE IT REMEMBERED that on the 20th day of July 1956 Paul W. Mousier as Vice President and Paul W. Mousier as Assistant Secretary of Safeway Stores Incorporated, to me known to be said officials and the premises to and approved by the Planning Commission of the City of McPherson, who executed the above and foregoing instrument on its behalf and duly acknowledged the execution of the same, to be the act of said corporation.

IN WITNESS WHEREOF I have set my official signature and affixed my Notarial Seal on the day and month above written.

Paul W. Mousier Notary Public
 My Commission expires May 2, 1959

DESCRIPTION: A tract of land being part of Southwest Quarter (SW 1/4) of Section Twenty Seven (27) Township Nineteen (19) South, Range Three (3) West of the Sixth (6th) Principal Meridian, McPherson County, Kansas, lying North of the Chicago, Rock Island and Pacific Railroad Company right of way, South of College Place Addition to and College Hill Addition and East of Eastmoor Addition to the City of McPherson, Kansas, containing Thirty Eight (38) and Thirty Five (35) Acres, more or less, and more particularly described as follows: Beginning of the Northwest (NW) Corner of Southwest Quarter (SW 1/4) of Section Twenty Seven (27) Township Nineteen (19) South, Range Three (3) West of the Sixth (6th) Principal Meridian, thence East on quarter Section line One Thousand Eight Hundred One and one half (1801 1/2) feet to a point Eight Hundred Forty Five (845) feet west of Northeast Corner of said Southwest Quarter (SW 1/4) of said Section Twenty Seven (27) Township Nineteen (19) South, Range Three (3) West of the Sixth (6th) Principal Meridian, thence South Three Hundred Twenty Five (325) feet more or less along said right of way to a point on the west line of said Section Twenty Seven (27), thence North along said section line One Thousand Five Hundred Twenty Five (1525) feet and Six Tenths (1524) feet more or less to the place of beginning.

State of Kansas, County of McPherson, SS.
 I, G. Johnson, Licensed Civil Engineer of the State of Kansas and resident of McPherson, Kansas do hereby certify that I did on the 18th day of May 1956 survey and determine locations of Blocks, Lots, Streets and easements as shown on accompanying plat of Blocks 6 to 10 inclusive of Eastmoor Addition to the City of McPherson, Kansas. I also certify that the above description is correct and accompanying Plat is a true exhibit of said survey.

G. B. Johnson Engineer
 Subscribed and sworn to before me this 18th day of May 1956 at McPherson, Kansas.

My Commission expires 9-28-56
G. B. Johnson Notary Public

State of Kansas, County of McPherson, SS.
BE IT KNOWN, That the accompanying Plat has been submitted to me and approved by the Planning Commission of the City of McPherson, Kansas on this the 10th day of August 1956.

Paul W. Mousier Chairman of Planning Commission
 State of Kansas, County of McPherson, SS.
 I, Paul W. Mousier, City Clerk of the City of McPherson, Kansas, hereby certify that the accompanying Plat has been approved by the Board of City Commissioners of McPherson, Kansas on this the 10th day of August 1956.

IN WITNESS WHEREOF I have signed my name and affixed the Seal of the City of McPherson, Kansas on this the 10th day of August 1956.

Paul W. Mousier City Clerk.

Map of Eastmoor Addition, McPherson, Kansas
 The instrument was filed for record on the 23rd day of July, A. D. 1956
 at the office of the County Clerk, McPherson, Kansas.
Paul W. Mousier County Clerk
 My Commission Expires May 2, 1959